



HÖMA

TULUM

homatulum.com

EMBRACE A NEW WAY OF LIVING

HOMA is a ritual of life where we celebrate each day in conscious harmony. Our goal is to transform the daily experience so that our “Homats” flow in a place where they feel stable and happy, in peace and in an environment that is a reflection of themselves.

Find your home at HOMA...





MASTER PLAN

A sustainable forward-thinking apartment complex built on 1500 m², with more than 60% protected jungle.

We offer suite-type apartments with one or two bedrooms with the option of a private pool, balcony overlooking the jungle, or private rooftop. Our buildings also offer studio-type apartments with common areas including swimming channels, co-working room and decorated rooftops.













HONEST MATERIALS

Inspired by a bohemian spirit and an ecological awareness we decided to apply exclusively honest materials.

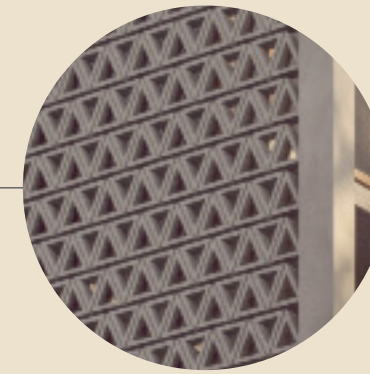
These materials are typical of the region and are used in their most natural state, without affecting efficiency and functionality, with a design true to the Tulum experience.



Polished concrete floors



Chukum walls and ceilings



Concrete lattice work on our buildings



Mayan brick wall



Tzalam kitchen and closets



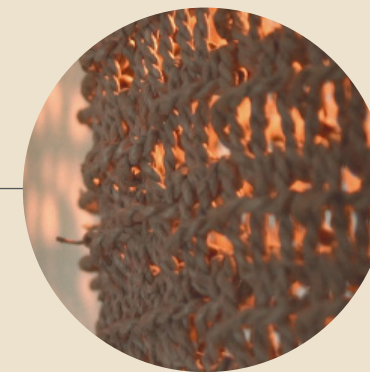
Tzalam and Pukte wood finishings



Cumaru access doors



Pools made with polished white cement



Tulum style hanging lamps

OUR THREE DESIGN PRINCIPLES



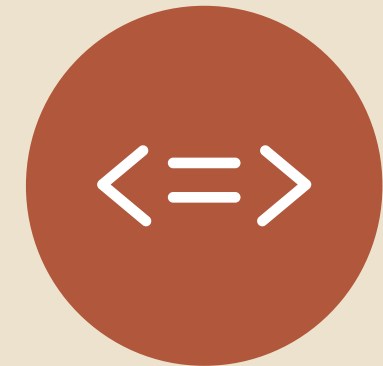
Optimize the User Experience.

We put our Homats at the center of every decision, that's why we adhere to values of spirituality and balance. Through these we provide a place for the creative energy to flow freely.



Conscious Sustainability.

At HOMA we are committed to being at the forefront in environmental solutions. We take care of the land that has lent us its space and we protect more than 60% of the local vegetation.



"Less is More"

We select the best materials to maximize the durability and aesthetics of the design. We also try to avoid visual excesses and we celebrate everything organic and natural.



9 SUITES

12 STUDIOS





A HOLISTIC
EXPERIENCE



MIND AND BODY

- **Meditation and yoga room**

An ideal space for introspection, and the development of attention. Start each day by attending our group yoga classes.

- **Exercise stations and outdoor gym**

Find stations for TRX, free weights or punching bags. Clear your mind by training your body. Besides, the km 0 of the region 15 circuit starts here. Follow recommended routes to do your daily 5k.

- **Communal library**

Borrow a book, exchange it, or share your written thoughts at Homa's library. Knowledge is amplified in this space.





CREATIVITY

- **Co-working**

Enjoy our open spaces dedicated to co-creation with the best Wi-Fi in the region. Get into action as you design your next big project.

- **Social lounge**

Find a comfortable space to read, work, or simply relax. A perfect space to share and enjoy with friends or colleagues.





RELAXATION AND ENJOYMENT



- **Namaste pool**

Inspired by the Fibonacci sequence, our pool is the center of sociability and relaxation.

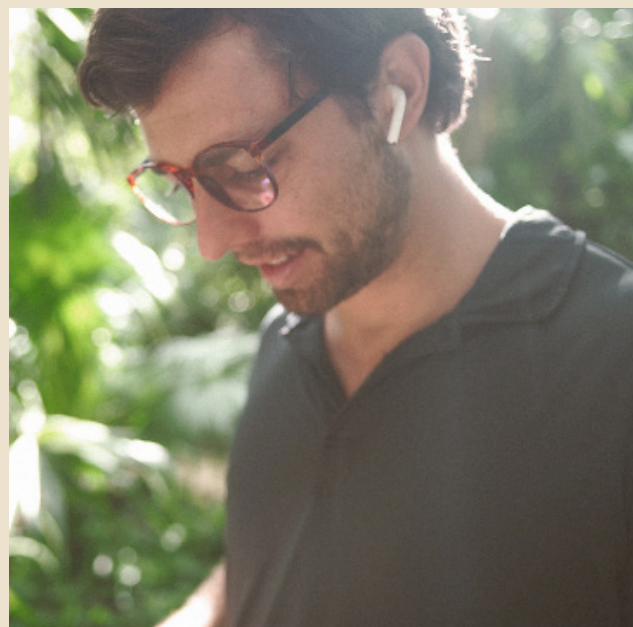
- **Individual spaces**

Throughout the complex you can find spaces and hammocks for contemplation and reflection. Feel free to relax and lose yourself in them.

- **Outdoor evenings**

Enjoy the view from the rooftop or relax from the pool. You can also share an evening with friends with HOMA's outdoor ceramic grill which lets you prepare a meal while significantly lessening its impact on nature.





GENERAL SERVICES

- **High speed internet**

Even inside the jungle, never miss a meeting, a message, or a class. HOMA invests in the best connectivity in La Veleta and Region 15.

- **Laundry**

Free laundry stations are available to all our users. Make yourself at home by keeping up with your daily routine.

- **Storage**

We have a space to store suitcases, sports equipment, scuba, wakeboards or whatever you want to leave with us.



SUSTAINABLE MOBILITY



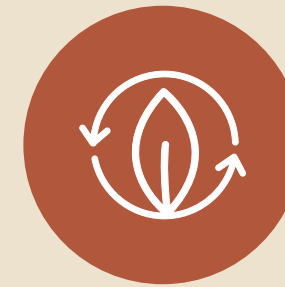
- **EcoMobility**

We offer a bicycle for every unit, free of charge, as well as electric bicycles and razors for daily use and rental.

- **EcoParking lot**

All units have parking and we supply charging ports for sustainable vehicles.





SUSTAINABLE SOLUTIONS

- **Passive design**

Passive design to optimize light and wind conditions.
Integration and protection of more than 60% of the local vegetation.

- **Energy efficiency**

Solar panels and energy for water heating.
Hydration system using the humidity of the environment.
Sewage and sullage water treatment.
Waste separation.

- **Ecological agriculture**

Organic material management for compost.
Organic gardens available.
Use of microfauna to treat pests.

SUITES

Three suite-type apartments with one or two bedrooms with the option of a private pool, balcony overlooking the jungle, or private rooftop.



JUNGLE GARDEN AND POOL

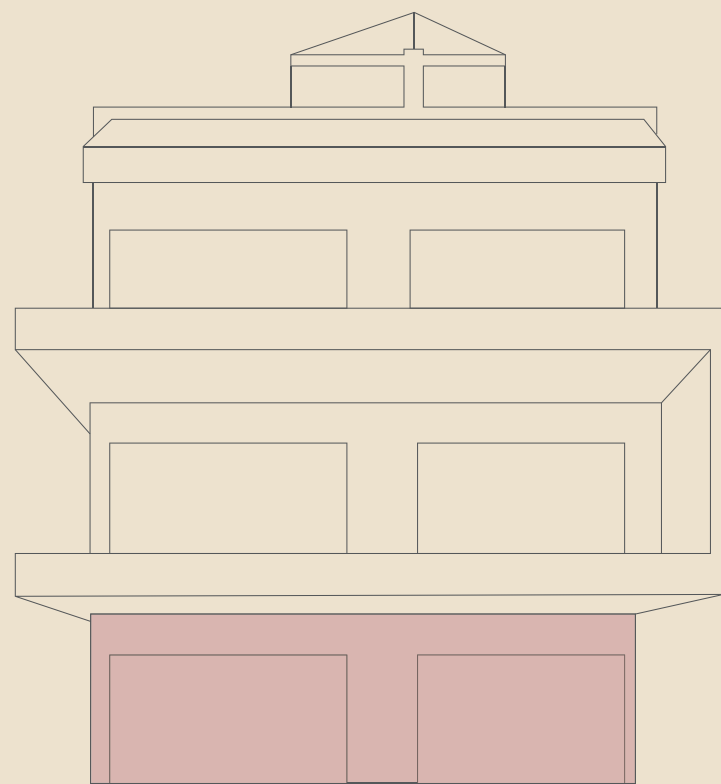


Ground floor

One-bedroom suite, full bathroom, closet, deck with pool overlooking the jungle, equipped kitchen, laundry area, a/c and Tulum-style decoration.

**See payment plans.*

Internal Area	60,82 m ²
Deck	17,11 m ²
Private Pool	8,64 m ²
TOTAL	86,57 m²





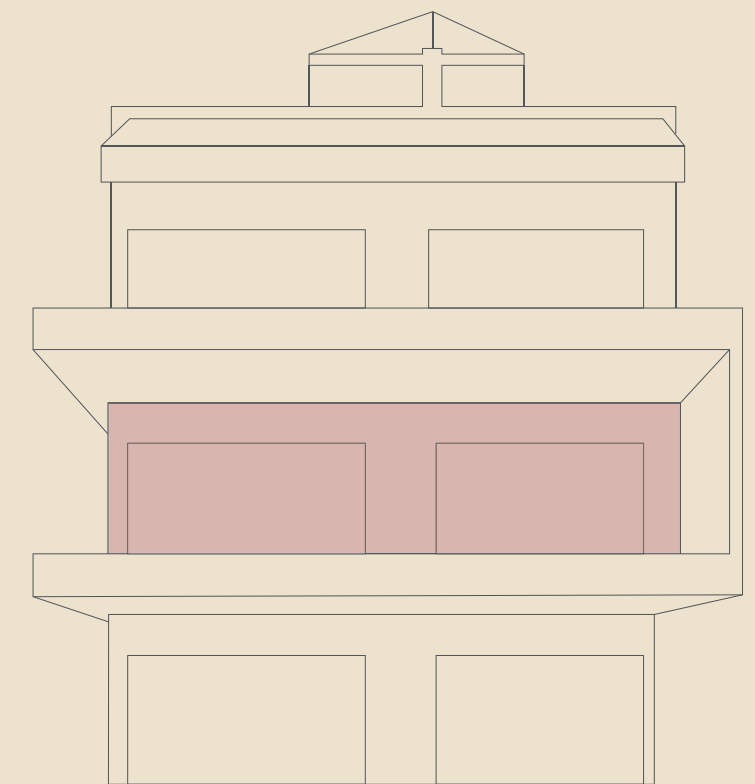
JUNGLE BALCONY

First floor

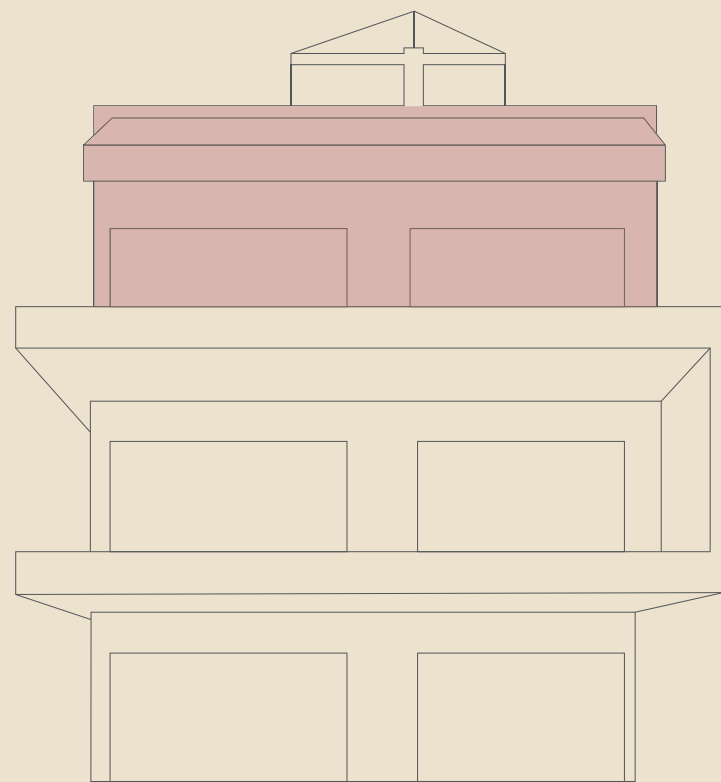
One-bedroom suite, full bathroom, closet, deck with pool overlooking the jungle, equipped kitchen, laundry area, a/c and Tulum-style decoration.

Internal Area	63,12 m ²
Deck	23,80 m ²
TOTAL	86,92 m²

*See payment plans.



JUNGLE BALCONY & ROOFTOP



Pent House**

Two bedroom suite with bathroom, closet, deck, equipped kitchen, laundry area, a/c and Tulum decoration. Includes roof terrace with palapa, solarium and private pool.

*See payment plans. **Option for a one bedroom suite available.

Internal Area	60,82 m ²
Deck	23,80 m ²
Rooftop with pool	55,27 m ²
TOTAL	139,89 m²













STUDIOS

Two studio-type apartments with common areas including swimming channels, co-working room and decorated roof tops.



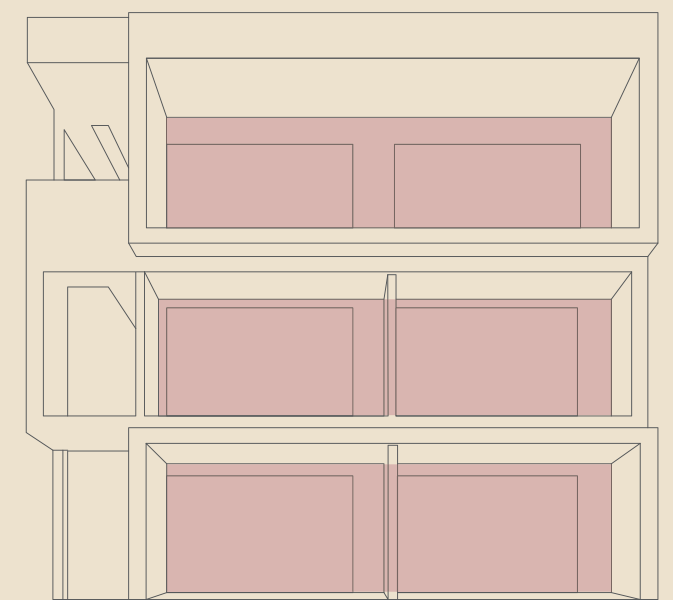
CREATIVE JUNGLE

Ground floor | First and second floor.

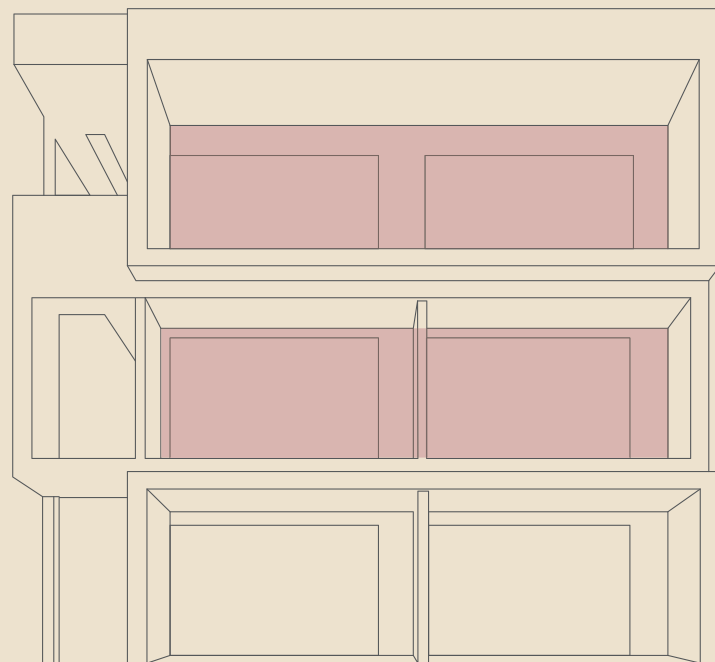
Fully equipped studios with kitchen, bathroom, closet, deck overlooking the co-working area and lounges, a/c and Tulum-style decoration. Access to the common roof top that includes kitchenette, solarium, architectural pool and bar.

Internal Area	26,13 m ²
Deck	5,55 m ²
TOTAL	31,68 m²

*See payment plans



JUNGLE BALCONY LOFT



Loft | First and second floor**

Fully equipped lofts with kitchen, bathroom, closet, terrace overlooking the co-working area and lounges, a/c and Tulum-style decoration. Access to the common roof top that includes kitchenette, solarium, architectural pool and bar.

Internal Area	52,26 m ²
Deck	11,10 m ²
TOTAL	63,36 m²

*See payment plans. **Per client's request



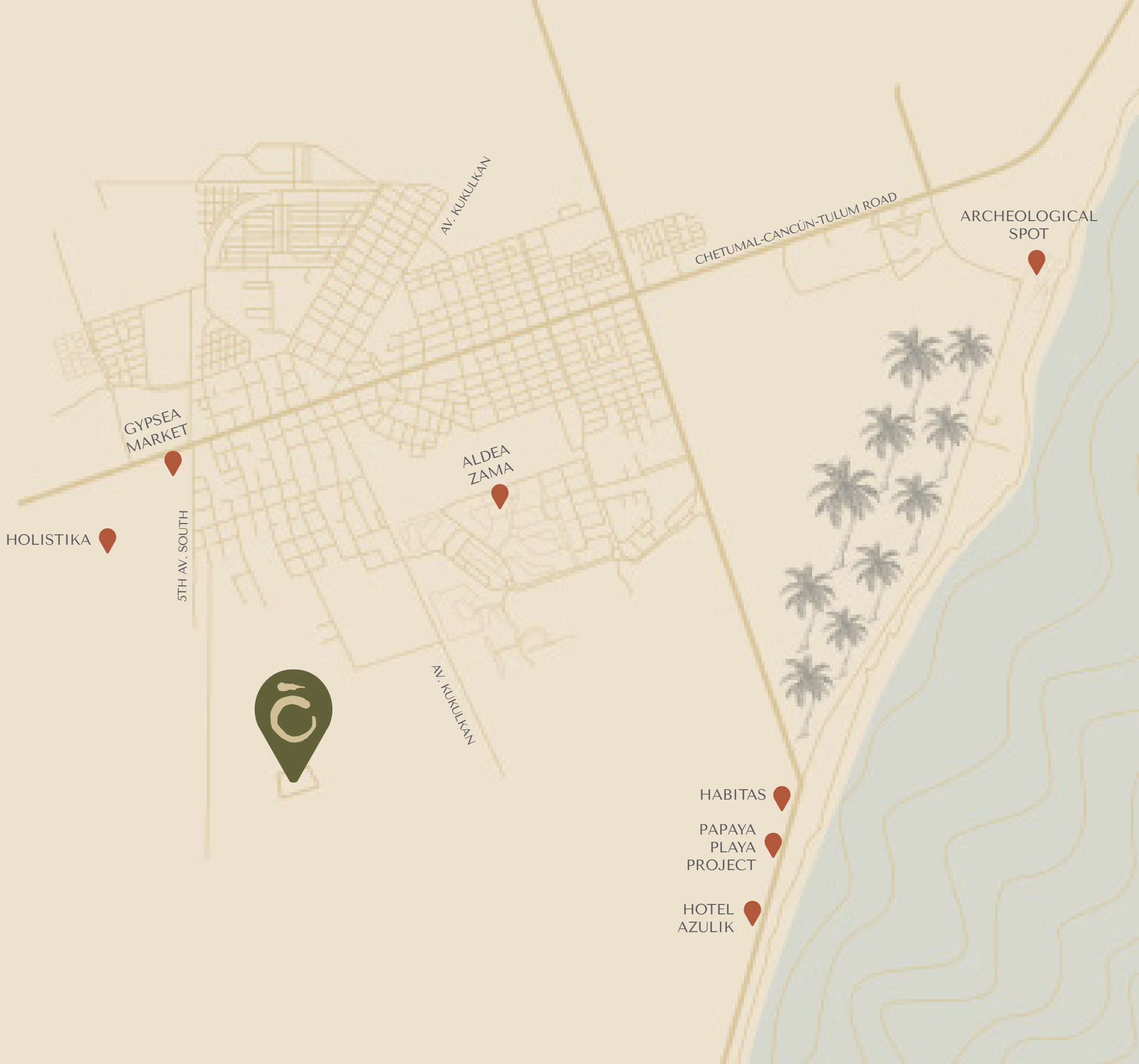




LOCATION

Homa, a natural sanctuary tucked away from the bustle of the city. This haven allows the peace and contemplation of living in the jungle while still providing access to the vibrant community of Tulum.

Homa is located in the heart of Tulum in region 15 a residential area in the midst of an urban jungle. Only minutes away, you can find pristine beaches, Mayan Ruins, and all the amenities the town of Tulum has to offer.



FLEXIBLE PAYMENT PLANS

Presale price

50% down payment and 50% upon delivery

35% and 12 monthly payments until delivery

List Price

20% and 12 monthly payments until delivery.

Reservations starting at

\$3,500 USD



HÖMA

T U L U M

Phone & WhatsApp: +52 984 204 3977 | live@homatulum.com

homatulum.com

  [@homatulum](https://www.instagram.com/homatulum)